

## CENTAURI Mounting and Use Instructions

### Congratulations !

You have purchased a new mailbox manufactured with care, exclusively using high grade stainless steel

### What's in the box ?

- 1 mailbox secured with 1 cylinder-lock
- 2 lock-keys

### What do you need ?

- Double-sided adhesive tape (3M™ VHB™ Tape 5952 or equivalent)
- Polyurethane adhesive and sealant (Bond It PU18 Polyurethane Sealant (EU3) Grey or equivalent)
- Level



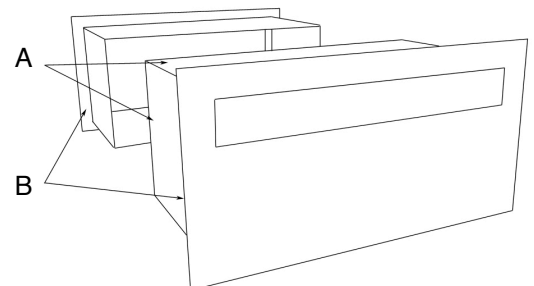
### Mailbox characteristics

The Centauri mailbox has been especially designed to be mounted in concrete or wood bollards and walls. Before installation, the selected support must be prepared with care following these requirements:

- whole size
- minimum thickness
- maximum thickness
- surface

### Mounting the mailbox

1. Separate the front and the back parts, and collect the keys
2. Settle the mailbox in your support (bollard or wall) and make sure that the mailbox fits perfectly and that it is well leveled
3. Get both part separate
4. Apply a double-side adhesive tape around the front part body as shown on the figure's arrows A, and bend a corner of 5 cm. IMPORTANT: Do not remove the sticker protection at this stage
5. Apply a Polyurethane adhesive and sealant rope on both part sides as shown on the figure's arrows B
6. Settle the mailbox in place and keep pressed until the Bond is drying
7. Open the mailbox lock door and remove the sticker strips protection
8. Press the body from the inside of the box to have the sticker well attached on both parts body
9. Apply the silicon around both part faces to obtain a nice finish and increase the water-resistance



**You are done !**